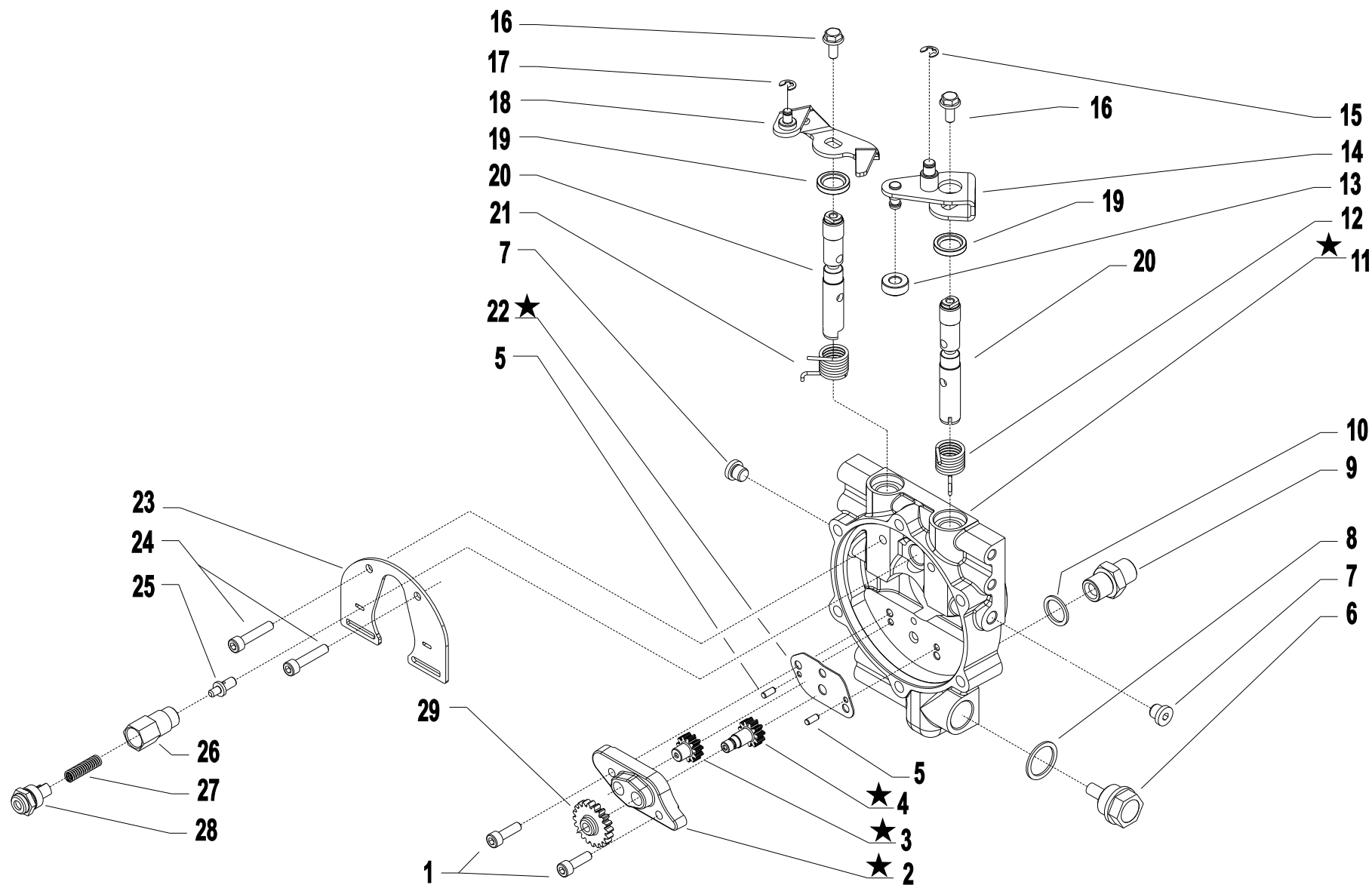


# POWERSAFE CLUCH CONTROL



**i** = info - stop 2 sec. ★ = new part

Pos.	Code	Q.ty	Description	Notes
1	31152063		SCREW TCEI M6X20 UNI 5931	
2	56356364		PUMP COVER PS/14	REPLACE 51156214 + 52456217 + 52456223 + 56356661 +
3	52456371		PUMP GEAR PS/14	REPLACE 51156214 + 52456217 + 52456223 + 56356661 +
4	52456372		PUMP GEAR	REPLACE 51156214 + 52456217 + 52456223 + 56356661 +
5	34221040		CYLINDRICAL PLUG	
6	58170021		PLUG	
7	580C0041		PLUG	
8	F0844273090		GASKET 22X28X1,5 CU 99,5	
9	30000197		NIPPLE	
10	31480184		COPPER WASHER 16,7x22/1,5	
11	59256745		FLANGIA FRIZIONE CON P.I./PS/14	REPLACE 51156214 + 52456217 + 52456223 + 56356661 +
12	58056222		SPRING	
13	55256228		ROLLER	
14	59056225Z		CLUTCH LEVER	
15	35211060		SEEGER RING E 6 UNI 7434	
16	31112084		SCREW TE C/F M6X14 DIN 6921 8G	
17	35211050		SEEGER RING E 5 UNI 7434	
18	59056748Z		LEVA STOP C.TA PS/14 ZNT	
19	38211400		OIL SEAL 14X22X4	
20	52456220		DISTRIBUTOR	
21	58056221		SPRING	
22	56356747		PUMP RECEPTOR PS/14	REPLACE 51156214 + 52456217 + 52456223 + 56356661 +
23	56156224		SHIELD	
24	31152060		SCREW TCEI M6X30 UNI 5931	
25	56456657		VALVE	
26	56156658		VALVE SEAT	
27	58056683		SPRING	Sostituisce 58056192 dalla matricola 883609
28	56356242		PLUG	
29	52456235		PUMP GEAR	

SERIAL  
START  
**A001005780**

**POWERSAFE CLUCH CONTROL**

CODE REV  
**B.01.01.A0001\_05**